

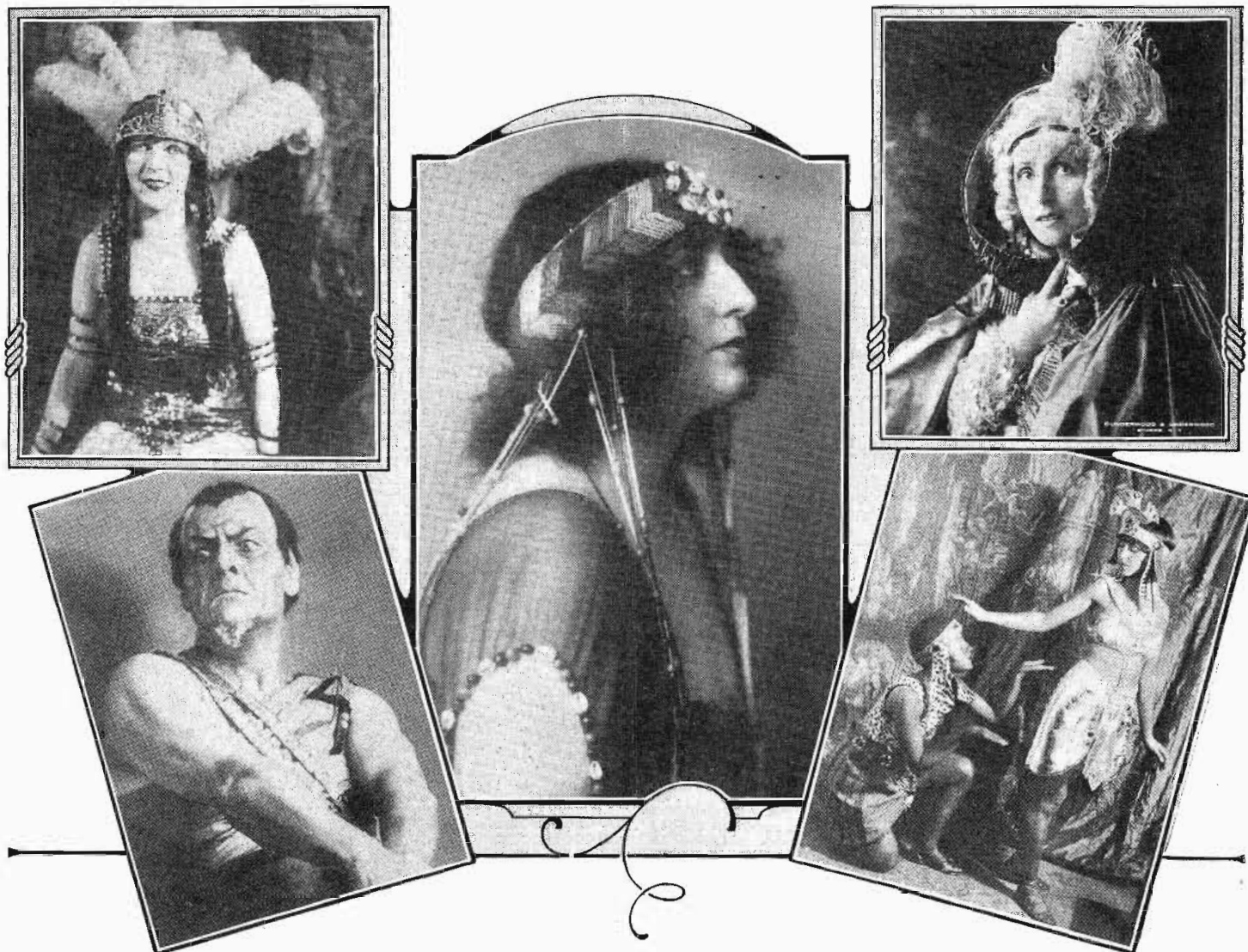
RADIO BROADCASTING NEWS

Vol. 3

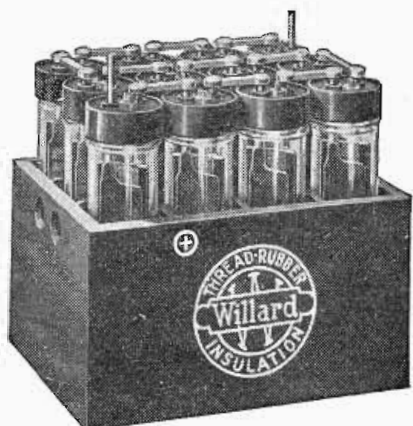
JANUARY 20, 1923

No. 3

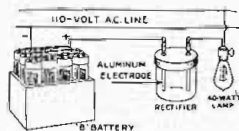
Chicago Grand Opera Stars Heard through Station KYW.



Upper Left:—Ina Bourskaya, as Amneris in Aida. Lower Left:—Feodor Chaliapin as Mefistofele. Center:—Claudia Muzio as Aida. Upper Right:—Amelita Galli-Curci as Manon. Lower Right:—Anna Ludmila and Amata Grassi in in Aida Ballet.



The Willard Radio "B" Battery is a 24-volt rechargeable battery. Glass jars — Threaded Rubber Insulation.



This rectifier keeps your battery charged. Costs practically nothing to use.

It Sure Takes Good Batteries

Some say it's "ether waves" that do the business—*some say not*—but they're all pretty well agreed that you can't get the concerts the way you should unless you're hooked up to good reliable "A" and "B" batteries.

Ask your dealer or the nearest Willard Battery Station to show you the "B" Battery illustrated, also the 6-volt "A" battery.

Willard Storage Battery Company, Cleveland, Ohio

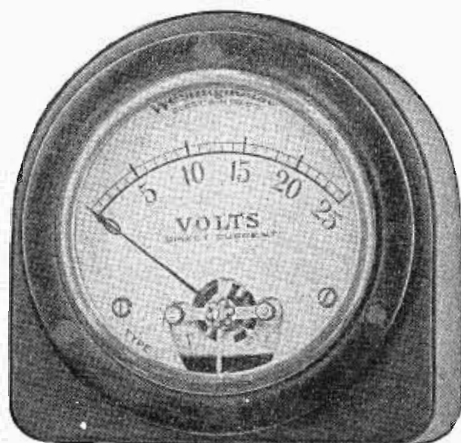
Willard

THREADED RUBBER BATTERY.

Westinghouse Types PX-2 and PX-3 Portable Radio Instruments



These portable instruments are particularly useful for temporary service, such as testing. They are also used where it is not convenient or desirable to mount instruments permanently on panels.



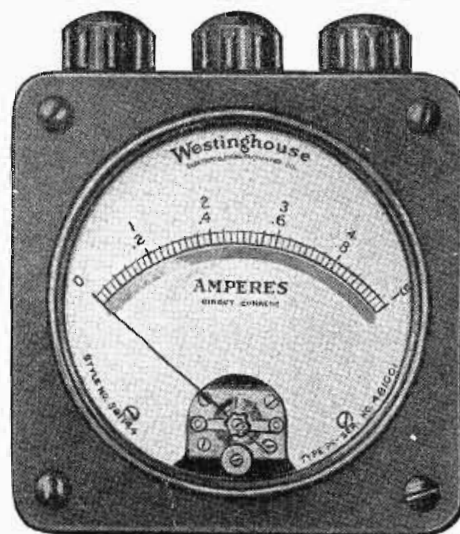
Type PX-2 Voltmeter

They have the same movements as our Type BX and CX panel-mounting instruments, and are enclosed in dust, moisture and acid-proof cases.

Folder 4471-A tells all about them

**WESTINGHOUSE ELECTRIC
& MANUFACTURING CO.**
Newark Works, Newark, N. J.

Member of Radio Section
Associated Manufacturers of Electrical Supplies.



Type PX-3 Ammeter

RADIO BROADCASTING NEWS

Published Weekly to increase interest and enjoyment in Radio Broadcasting

Address all communications to

EDITOR, RADIO BROADCASTING NEWS, 1205 Keenan Building, Pittsburgh, Pa.

SUBSCRIPTION ONE DOLLAR PER YEAR

FIVE CENTS PER COPY

Vol. 3

January 20, 1923

No. 3

Successful Opera Season Closes at Chicago

BY the time you receive this issue of RADIO BROADCASTING NEWS the Chicago Civic Opera Association will have finished one of the most successful opera seasons ever experienced in Chicago; a season devoted to popular prices which resulted in packed houses every night during the entire run of ten weeks. At the same time Radio broadcasting station KYW, one of the four large stations operated by the Westinghouse Electric & Manufacturing Co., and the only station in the world to broadcast grand opera, concluded the most important, instructive, and entertaining feature of its daily twelve hour schedule. During the entire opera season station KYW put into the air productions of the best known operas two nights each week, through the courtesy of the Chicago Civic Opera Association, whose hearty co-operation made this feature possible.

During this ten weeks run of the opera in Chicago thousands of letters were received at the Westinghouse office, bringing words of commendation and thanks from every state in the Union. The majority of these letters were received from people residing in the more isolated districts of the United States where good music is a rare treat, and opera only a dream. By broadcasting the more famous works of the great masters station KYW has done much to develop a greater appreciation of classical music among the residents of the United States.

The broadcasting of Grand Opera was made possible by the installation of special sealed telephone wires in the Auditorium Theatre, connecting the

huge theatre directly with the station. Three microphones picked up the music of the operas as they were produced on the stage. The music then passed over special wires to the transmitting equipment in the radio station, where it received the proper modulation for broadcasting and was sent out into the ether waves to be tuned in by millions of enthusiastic owners of receiving sets.

KYW now has the reputation of being the only station in the world to broadcast Grand Opera. This year radio has given the people of the United States who are fortunate enough to own receiving sets, an opportunity to hear the brilliant interpretations and singing of Chaliapin, the famous Russian basso, in the role of Mefistofele; Ina Bourskaya, as Amneris in Aida; Galli-Curci, in the role of Manon; and Claudio Muzio in the role of Aida, in the opera of that name. Picture yourself sitting comfortably at home in your favorite arm chair, listening to the beautiful voices of such internationally famous singers as those just named, and you are visualizing the principal cause for the popularity of opera as broadcasted by KYW.

Perhaps the most noteworthy fact in connection with this operatic achievement is that while the broadminded policy of the Opera Association made it possible for the operas to be heard by anyone having a radio receiving set, yet each night the theater was crowded with those who wished also to see these great productions.

No doubt many radio enthusiasts will avail themselves of the opportunity to attend some of these operas, offered by the post season tour of the Chicago artists to Eastern cities.

Sunday, January 21, 1923

**KDKA—360 Meters, Westinghouse Electric,
East Pittsburgh, Pa.**

- 11:00 A. M. Services of the Emory Methodist Episcopal Church, North Highland Ave., at Rippey Street, Pittsburgh, Pa., Rev. W. Wofford T. Duncan, Minister.
- 1:45 P. M. Children's Bible Story, told by Rev. W. A. Logan, Pastor, Alpha Lutheran Church, Turtle Creek, Pa.
- 2:00 P. M. Annual Memorial Service of the Pittsburgh Firemen's Memorial Association, from the Davis Theatre, Pittsburgh, Pa.
- 3:30 P. M. Organ Recital from Calvary Episcopal Church, Shady Ave., Pittsburgh, by J. H. Weisel, organist of the Second Presbyterian Church, Pittsburgh, assisted by Alan B. Davis, Baritone.
- Program: "Marche Ruse," Schimke; "From the Southland," H. B. Gaul; Shepherd's Dance" (Henry VIII), German; "Dialogue d'Amour," Weisel; "Lento" (from two Pierrot Pieces), Cyril Scott; "Will O' the Wisp," G. B. Nevin. Baritone solos to be selected.
- 4:45 P. M. Vesper Services of the Shadyside Presbyterian Church, Amberson Ave., Pittsburgh, Pa., Rev. Hugh Thomson Kerr, Minister.
- 7:30 P. M. Services of the Calvary Episcopal Church Shady Ave., Pittsburgh, Pa., Rev. E. J. Van Etten, Rector.

**WJZ—360 Meters, Radio Corporation-Westinghouse
Newark, N. J.**

- 10:30 A. M. Musical program.
- 11:00 A. M. Morning services at St. Thomas' Church, Fifth Avenue, New York City. Sermon by the Rev. Ernest M. Stires, D.D. Rector, T. Tertius Noble, M.A. organist, will direct the boys and men's choir of 60 voices.
- 3:00 P. M. City Symphony Concert direct from the Century Theatre. The City Symphony Orchestra under the baton of Dirk Foch composed of 83 players elected for their musical talent and symphonic experience, is maintained by the Musical Society of the City of New York. Young soloists of real talent are heard at each concert. The arrangements for broadcasting these concerts were made with the assistance of Popular Radio and the Western Union Telegraph Co.
- 4:40 P. M. "Something for Everybody", copyrighted stories by the Youth's Companion. "Milk by the Yard", a bit of humor. "The Good Penman", suggestions that will help you to improve your handwriting. "Joy in Store for Hubby", one way to find out what size coat a man wears. "A Doubtful Compliment", that caused a hearty laugh; "The First Interview", how the lady reporter caught the President in swimming.
- 6:30 P. M. "Readings and Records from the Bubble Books that Sing", by Ralph Mayhew, Harper & Bros.
- 7:00 P. M. "Musical Stories" by Mary Plowden Kernan, lecturer for the New York City Board of Education.
- 7:30 P. M. "Everglades of Florida", by Charles Baker, Mehegan Lake, N. J.
- 7:45 P. M. Estey Organ Recital from the Estey Auditorium, New York City. The Estey Organ

Recently at Station KQV



Vera Kaighn, soprano, and her talented husband Danny Nirella, band and orchestra director, shown "fixing up a score".

several weeks ago was the first broadcast of WJZ to be heard in the British Isles.

Program: "Italian in Algiers Overture," Rossini; "Minuetto L'Arlesienne Suite," Bizet; "To Spring," Mathews; "Offertoire," Wely; "Gavotte a La Cour," "Adagio-Sostenuto Moonlight Sonata," Lemare; Beethoven; "Saki from Persian Suite," Stoughton; "Oh, for the Wings of a Dove," Mendelssohn; "Serenade," MacFarlane; "Grand Chorus in D," Guilmant.

- 8:45 P. M. Concert by R. B. Kingman, cellist, for the New York Philharmonic Stringed Quartet.
- 9:45 P. M. A mixed Shakespearean program by Mona Morgan, well-known Shakespearean Interpreter.

**KYW—400 Meters, Westinghouse, Chicago, Illinois
Central Standard Time**

- 11:00 A. M. Central Church Services broadcasted from Orchestra Hall. Dr. Frederick F. Shannon, Pastor. Musical Program under the direction of Daniel Protheroe.
- 3:30 P. M. Studio chapel services will be conducted by the Rev. George T. McCarthy, pastor of St. Margaret Mary Catholic Church. The Rev. Mr. McCarthy was a senior chaplain and captain of the United States Army during the World War with the Seventh division and was wounded in action at Vieville and Bois le Pretre. Because of distinguished service under fire, Father McCarthy received the Church War Cross and the Croix de Guerre.
- A musical program will be furnished by the Church choir under the direction of Mrs. James F. Cooney.
- 7:00 P. M. Chicago Sunday Evening Club Services broadcasted from Orchestra Hall. Special Musical Program by the Choir of one hundred under the direction of Edgar Nelson.

**WGY—370 Meters, General Electric Company,
Schenectady, N. Y.**

- 10:30 A. M. Church service and sermon.
4:30 P. M. Vesper service and sermon.

Monday, January 22, 1923

**KDKA—360 Meters, Westinghouse Electric
East Pittsburgh, Pa.**

- 10:00 A. M. Music.
- 12:30 P. M. Music and Weather Report.
- 6:15 P. M. Dinner Concert by the KDKA Little Symphony Orchestra, Victor Saudek, Director.
- 7:15 P. M. News. Letter from "Farm and Home."
- 7:30 P. M. "Bedtime Story for the Children."
- 7:45 P. M. Report of the New York Stock Exchange. Weekly Survey of Business Conditions prepared by the National Industrial Conference Board.
- 8:00 P. M. Carolyn Robelen, Supervisor of County Work of the Public Health Nursing Association will speak on "Public Health."
- 8:15 P. M. "Pennsylvania's Tax, Income and Administration Problems" by C. C. C. Stotler, Treasurer of the Title Guaranty Company, Pittsburgh, Pa.
- 8:30 P. M. Concert by John Rodda Studio, Carnegie, Pa. John Rodda, tenor; Lino Bartoli, violin; Delilah Potter King, reader; Hazel I. Drake, piano and accompanist.
Program: Selections by the Orchestra, "Prelude," Massenet; "Concert Waltz," Sleeping Beauty, Tschaiakowsky; Medley of Popular Hits; "A Day in Venice," including "Dawn," "Gondolier," "Venetian Love Song," and "Good Night; "Scenes from the Mikado," Sullivan; and "Washington Post," Sousa.
Program: Piano solos, "Siciliana," Ignoto-Respighi; "Bal-letto detto," from "Il Conte Orlando," Molinaro-Respighi; "Scherzo," Chopin. Readings, "The Humble Petition," and "What's the Trouble;" "Christmas Substitute," Violin solos, "Minuet," Beethoven; "Gavotte," Gossec; "Meditation," Glana Nos; "Valse Bluette," Drigo Auer; Tenor solos, "Angel's Serenade," Braga (with violin obligato); "Mother's Prayers Have Followed Me," Ackley; "A Moonlight Song," Cadman; and "Greeting" Hawley.

**WJZ—360 Meters, Radio Corporation-Westinghouse
Newark, N. J.**

- 9:00 A. M. Early morning reports and prices and farm products.
- 11:55 A. M. Standard Time Signals and weather forecast.
- 12:00 M. to 2:15 P. M. Opening prices on active bonds and stocks, grain, coffee and sugar; mid-day reports and prices on farm products; musical program.

WESTINGHOUSE

RADIO "A", "B" and "C"



BATTERIES

are built by the Westinghouse Union Battery Company, at Swissvale, Pa., and carry the traditional Westinghouse assurance of fine engineering and high quality.

There's a Westinghouse Battery for practically every radio requirement. At your dealer's or any Westinghouse Battery Service Station

- 4:00 P. M. Closing prices on stocks and bonds, grain, coffee and sugar.
- 4:05 P. M. "Fashions" from Women's Wear Daily Newspaper.
- 5:30 P. M. Resumé of Sports; musical program; special features; closing prices on stocks, bonds, grains, coffee and sugar.
- 6:00 P. M. Business and Industrial Conditions in the United States as observed by the National Industrial Conference Board.
- 7:00 P. M. Stories from St. Nicholas Magazine.
- 8:30 P. M. Talk by Fannie Kilbourne, whose short stories about young people in their 'teens have given her a distinctive place among contemporary magazine fiction writers, was born in Minneapolis, where she was educated, and where she began her writing career on the Minneapolis Journal. She has written more than one hundred stories, the majority of which have been published in The Saturday Evening Post, The American Magazine, The Ladies Home Journal, The Red Book, The Womans Home Companion, The Delineator and other popular magazines. Miss Kilbourne will talk on how in observing people you secure plenty of material for story writing.
- 8:45 P. M. Concert by Charles P. Wellner, tenor of Rutherford, N. J., who is soloist at the Church of Epiphany, New York City.
Program: "Homming," T. Del Rego; "Still Wie Die Nacht," Carl Bohm; "Recitative and Aria from "The Prodigal Son," Sir A. Sullivan; "Messages," T. H. Grey; "Your Tiny Hand Is Frozen; G. Puccini; "Winter," "Pay Foster,"
- 9:15 P. M. "Our Good and Faithful Servant, Cork," by Edward Perlor.
- 9:30 P. M. Ampico Series of Distinguished Artists' Concerts, courtesy Wm. Knabe & Company; Rudolph Bochco, American Violinist, who has appeared as assisting artist to John McCormack and other famous singers, who already a remarkable violinist at eleven, was only fifteen years old when he became the leader of his own orchestra; Miss Penelope Davies, noted American Mezzo-Soprano, will sing.
- 9:55 to 10:00 P. M. Arlington Time Signals, weather forecast.
- 10:01 P. M. Program continued by Ampico Artists.

**KYW—400 Meters, Westinghouse, Chicago, Illinois
Central Standard Time**

- 9:25 A. M. Opening Market Quotations, Chicago Board of Trade.
- 10:00 A. M. Market Quotations, Chicago Board of Trade.
Quotations every half hour thereafter until 1:00 P. M.
- 1:20 P. M. Closing Market Quotations, Chicago Board of Trade.
- 2:15 P. M. News and Market Reports.
- 2:30 P. M. Closing quotations, Chicago Stock Exchange.
- 3:00 P. M. News and Sports.
- 4:00 P. M. News and Sports.
- 4:15 P. M. News, Market, and Stock Reports.
- 4:30 P. M. News and Sports.
- 5:00 P. M. News and Sports.
- 6:30 P. M. News, Financial and Final Market and Sport Summary. "Topics of the Day" furnished by Pathe Exchange.

Monday Programs

January 20, 1928

- 5:50 P. M. Children's Bedtime Stories.
8:00 P. M. to 9:00 P. M. Musical Program by
Courtesy of Lyon & Healy Concert & Artists Dept.
As a part of the program Isham Jones and his
Orchestra from the College Inn will play several
selections.
9:00 P. M. News and Sports.
9:05 P. M. Special features as announced by Radio-
phone.

WGY—370 Meters, General Electric Company

7:45 P. M. A Japanese Program.

Program: Orchestral selection, "Ballet Japonais," Goublier, WGY Orchestra; Reading, Something of Interest to All. (Copyrighted stories from the Youth's Companion); Orchestral selection, "Japanese Reverie," Bartlett, WGY Orchestra; Travelogue Address, "A Trip Through Japan." Part I, Arrival at Nagasaki, Dr. Sigel Roush; Baritone solo, "Japanese Death Song," Sharpe, James Stanley; Orchestral selection, "Suite Japonais," Yamada, First Movement—Sarashi, WGY Orchestra; Travelogue Address, "A Trip Through Japan." Part II—Flower Festival, Dr. Sigel Roush; Orchestral selection, "Suite Japonais," Yamada, Second Movement, Oyedo, WGY Orchestra; A Brief Explanation of Some Phases of Japanese Music; Orchestral selection, "A Japanese Sunset," Depper, WGY Orchestra; Travelogue Address, "A Trip Through Japan." Part III—In Old Japan, Dr. Sigel Roush; Orchestral selection, "Koko San," Kamoto, WGY Orchestra; Baritone solo, "Japanese Lullaby," DeKoven, James Stanley; Orchestral selection, "Japanese National Hymn," Hiromori, WGY Orchestra.

KQV—360 Meters, Doubleday-Hill Electric Co. Pittsburgh, Pa.

10:00 P. M. Owing to the large number of requests for special musical numbers received by this Station, tonight's program will be made up of the most important of these numbers so arranged as to make a program of interesting artistic flavor. In order to give KQV listeners the numbers they request a series of "Request Programs" will be given and arranged as program space permits, to be announced in **Radio Broadcasting News**, the daily papers, or by Radiophone. The Artists for the first of these programs will be specially chosen to broadcast the numbers to be given as being eminently well suited to the interpretation of each particular composition. It promises to be a feature of the season from this Station for which the regular KQV listeners are constantly furnishing the inspiration.

OTHER CLASS A STATIONS YOU MAY HEAR MONDAY

Time given is Eastern Standard (Arlington).

6:00 P. M.—WGI, WLK, WOS; 6:15 P. M.—WEAB; 6:30 P. M.—WEV, WGI; 7:00 P. M.—KWG, KYJ, WGI, WJAD, WLAG, WOAI, WPA; 7:30 P. M.—WBAB, WBS, WGR; 8:00 P. M.—WBT, WEAB, WRR; 8:15 P. M.—WAAP, WGR, WPA; 8:30 P. M.—WHAS; 8:45 P. M.—WNAD; 9:00 P. M.—WOS, WSY; 9:15 P. M.—WKN; 9:30 P. M.—WOH, WRR; 9:45 P. M.—WJAD; 10:00 P. M.—KDYS, KZN, WPA; 10:45 P. M.—WAAP; 11:00 P. M.—KFAF, KYJ, WBL; 11:30 P. M.—WAAP.

Key to call letters appears on page 16.

HOMCHARGE



Your
**RADIO
BATTERY**
for
A NICKEL

Enjoyable concerts and maximum receiving range are obtained only when your battery is fully charged.

THE HOMCHARGER

charges your "A" or "B" battery over night for a nickel without removing it from your living room. No fuss—no trouble—no dirt—requires no watching.

After the concert connect to any lamps socket, snap the clips on your battery and "turn in." While you sleep the HOMCHARGER is silently charging your battery, the charging rate being governed automatically. In the morning it is fully charged. No OTHER battery charger can boast of such **quick** and **economical** performance.

The HOMCHARGER is the only battery charger combining all of these NECESSARY HOMCHARGING features—SELF-POLARIZING—FIVE to EIGHT AMPERE charging rate—UNDERWRITERS APPROVAL—beautifully finished in mahogany and old gold—UNQUALIFIEDLY GUARANTEED. OVER 60,000 NOW IN USE.

Sold complete with ammeter, etc., by all good radio and electrical dealers for \$18.50. (\$25.00 IN CANADA).

See the RADIO HOMCHARGER DE LUXE at your dealer's or write direct for our FREE circular showing why the HOMCHARGER is the BEST battery charger at any price.

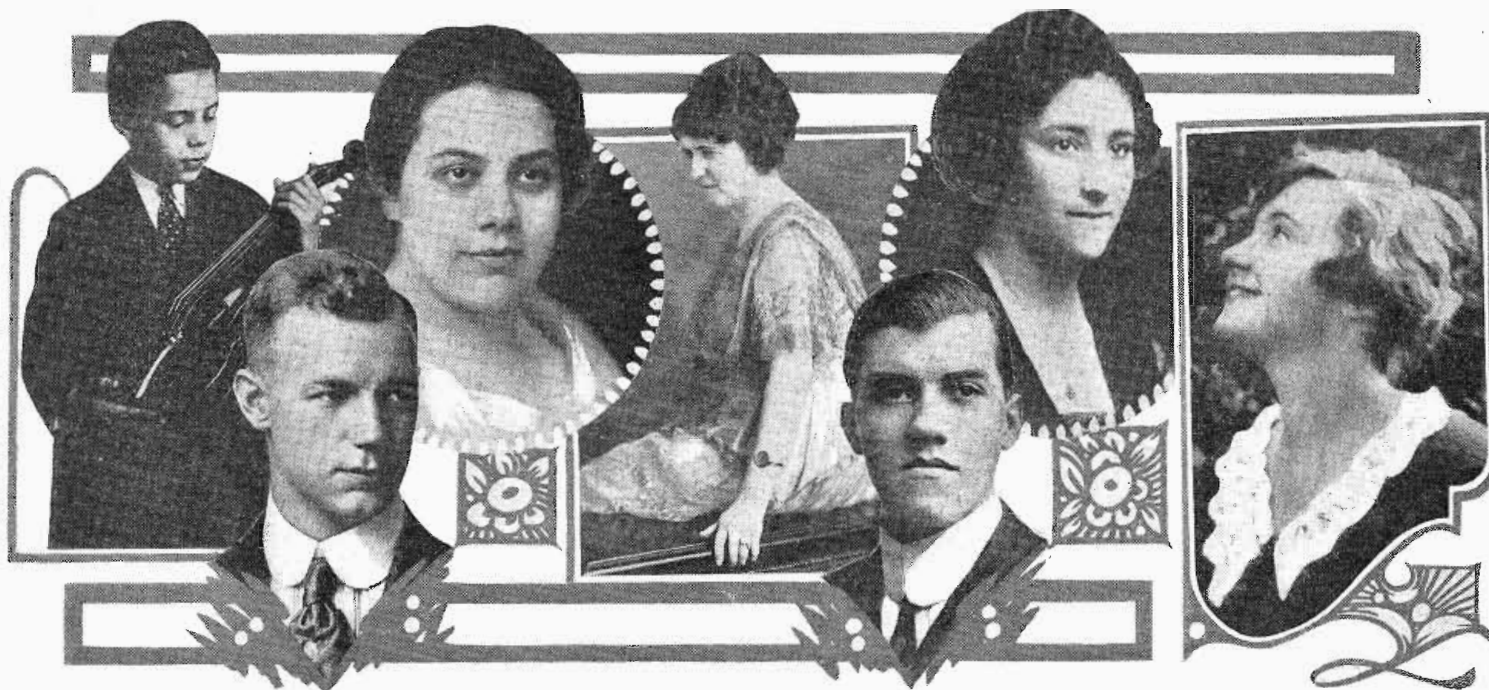
MOTORISTS

The HOMCHARGER will also
charge your AUTO Battery.

The Automatic Electrical Devices Co.
136 West Front St. CINCINNATI, OHIO

Largest Manufacturers of Vibrating Rectifiers
in the World

Recent Entertainers at Station KDKA



Left to Right:—Master Charles Riley, violinist; Arthur Anderson, baritone; Frances Strickler, contralto; Mrs. Lettie Austin Smith, reader; R. H. Bagnell, baritone; Leona Friedman, pianist; Mrs. George Hoffman, soprano.

Tuesday, January 23, 1923

**KDKA—360 Meters, Westinghouse Electric,
East Pittsburgh, Pa.**

10:00 A. M. Music.

12:30 P. M. Music.

7:00 P. M. News. Report of the New Stock Exchange..

"Health Hints" prepared by the United States Public Health Bureau, Washington, D. C.

7:15 P. M. "Fashions" by Harriet Webster, of the Joseph Horne Company, Pittsburgh, Pa.

7:30 P. M. Bedtime story for the Children.

7:45 P. M. "Intelligent Attention Paid to the Women Citizens by the Board of Public Education," by Irene McDermott, Supervisor of the Domestic Economy of the Pittsburgh Public Schools. "Coroboration," by a graduate of the Evening Cooking Class.

8:00 P. M. Reading "The Woman in the Home" by Elinor Barton.

8:30 P. M. Concert by Pupils of Chester C. Humphreys, of Charleroi, Pa. Lulu Buffle, Irene Jones, Mrs. R. G. Todd, sopranos; Amelia Heupel and Blanch Allison, contraltos; Joseph H. Pearson, baritone; and Chester C. Humphreys, tenor; Margaret Gunderman, accompanist.

Program: Soprano solos, "Where My Caravan Has Rested," Lohr; "Smilin' Through," Penn; "Oh, That We Two Were Maying," Nevin; "From the Land of the Sky Blue Water," Cadman; "Tell Her I Love Her So," DeFaye; "Open the Gates," Knapp; contralto solos, "Sacrament," MacDermid; "Homing," Del Riego; "To You," Hawley; and "I Passed By Your Window," Brahe. Baritone solos, "Kashmiri Song," Finden; and "Vale," Russel. Tenor solos, "Vesta la Guibba," from "I Pagliacci," Leoncavello; selections by the quartet, "The Sea Hath Its Pearls," Pinsuti; "Good Night, Beloved," Pinsuti. Piano selections.

**WJZ—360 Meters, Radio Corporation-Westinghouse
Newark, N. J.**

9:00 A. M. Early morning reports and prices and farm products.

11:55 A. M. Standard Time Signals and weather forecast.

12:00 M. to 2:15 P. M. Opening prices on active bonds and stocks, grain, coffee and sugar; midday reports and prices on farm products; musical program.

2:00 P. M. Janet Maurice, elocutionist.

4:00 P. M. Closing prices on stocks and bonds, grain coffee and sugar.

4:05 P. M. "Fashions" from Women's Wear Daily Newspaper.

5:30 to 6:15 P. M. Resumé of Sports; musical program; special features closing prices on stocks, bonds, grains, coffee and sugar.

7:00 P. M. Adventure Stories of Travel for Young and Old. Reading of "From the Deep of the Sea," by the author Captain Chas. E. Smith. Courtesy of the MacMillan Company.

7:30 P. M. "World War Anecdotes" by Major C. K. Weston, of East Orange, N. J.

8:00 P. M. Concert by Vera Thamm, dramatic soprano, pupil of Wm. N. Burritt of New York City, experienced in church and concert work. Miss Thamm has a very clear voice and bell-like.

8:30 P. M. "Foods and Recipes," by Miss Anne Lewis Pierce, Director of the New York Tribune Institute.

9:15 P. M. "Broadcasting Broadway," by Bertha Brainard.

9:30 P. M. Dance to the syncopated symphonies tonight played by the Vincent Lopez and his dance

Orchestra as broadcast direct from the Hotel Pennsylvania Grill. The Vincent Lopez Orchestra has played over the entire Keith Circuit as a Headliner and maintained first place at the "Palace" for weeks.

Several rare instruments add to the danceability of the music played by the Lopez Orchestra, the Sousaphone, invented by Sousa, played by former member of his orchestra, producing oboe tones of tremendous muted strength and the bass saxophone, played by former member of the Six Brown Brothers team who introduced this five foot instrument to the public when helping to make Sophie Tucker famous.

Vincent Lopez the organizer and leader of his orchestra, famous too by its playing for "debutante dances" at the Ross Fenton Farm, Asbury Park, is the son of Baroness Virginia von Gonsalvos, a Portuguese noble woman and a musician of some prominence. He has been playing since four years of age; is composer of "Sweet Sixteen," and is still a very young man. His Orchestra popularized "Sweet Lady," four months before the number was in print.

**KYW—400 Meters, Westinghouse, Chicago, Illinois
Central Standard Time**

- 9:25 A. M. Opening Market Quotations, Chicago Board of Trade.
- 10:00 A. M. Market Quotations, Chicago Board of Trade.
- Quotations every half hour thereafter until 1:00 P. M.
- 1:20 P. M. Closing Market Quotations, Chicago Board of Trade.
- 2:15 P. M. News and Market Reports.
- 2:30 P. M. Closing Quotations, Chicago Stock Exchange.
- 3:00 P. M. News and Sports.
- 3:30 P. M. News and Sports.
- 4:00 P. M. News and Sports.
- 4:15 P. M. News, Market and Stock Reports.
- 4:30 P. M. News and Sports.
- 5:00 P. M. News and Sports.
- 6:30 P. M. Children's Bedtime Stories.
- 8:00 to 9:00 P. M. Musical Program by Mariona Rakauska, Lithuanian soprano; Sallie Menkes, accompanist; George F. Gordon, baritone; Helen Linn, pianist; Wolverine Syncopaters, Vann Lynn, Director.

Program: Popular Dance Selections, by the Wolverine Syncopaters; Russian Folk Songs, Mariona Rakauska; (a) "Pastorale," Scarlotti-Tansig, (b) "About Strange Lands and People," Schumann, (c) "Contentedness," Schumann, Helen Linn; (a) "Blow, Blow, Thou Winter Wind," Sargent, (b) "Smilin' Through," Penn, George F. Gordon; Lithuanian Folk Songs, Mariona Rakauska; Scherzo in B Flat Minor, Chopin, Helen Linn; (a) "Invictus," Huhn, (b) "Miss Kitty O'Toole," Prothro, George F. Gordon.

- 9:00 P. M. News and Sports.
- 9:05 P. M. Special features as announced by Radiophone.

WGY—370 Meters, General Electric Co.

Schenectady, N. Y.

- 7:45 P. M. Dance Music Program.

Program: Fox Trot, "Why Should I Cry Over You," Miller, Metropolitan Dance Orchestra; Fred G. Reutling, piano;

**TOM for tubes
DICK for Sets
HARRY for Parts** Why?

Radio Corporation
Westinghouse
General Electric
Acme
Atwater Kent
Baldwin
Brandes
Burgess
Chelsea
Clapp-Eastham
Cunningham
Cutler-Hammer
Dubilier
Fada
Fahnestock
Frost
General Radio
Hipco
Homecharger
Hopewell
Kellogg
Kennedy
Klosner
Magnavox
Murdock
Pacent
Radio Service
Radiall (Amperite)
Remler
Rhamstine
Signal
Tuska
Western Electric

When you order radio material, don't start thinking where to get it. You don't need to go to one jobber for tubes, to another for sets and to a third for parts.

Ludwig Hommel & Co., can supply all your wants from crystal detectors to transmitting tubes. Moreover, they can fill your orders quickly, because their stock is large and because they have no retail trade to take first choice on the fast moving items.

Ludwig Hommel & Co.
wholesale exclusively.

Order all your requirements from
Ludwig Hommel & Co.

LUDWIG HOMMEL & CO
530-534 FERNANDO ST. — ZZZ — PITTSBURGH, PENNA.

William Wright, trumpet; Earl Cornell, clarinet; Peter Thimineur, violin (Director); Charles Osan, saxophone; Louis Thowen, drums; Fox Trot, "Mary, Dear," De Costa, Orchestra; Reverie, "Shadow Time," Johnson, Orchestra; Whistling selection, "Mocking Bird," with variations, Emmett, Charles Desmond; Fox Trot, "Send Back My Honeyman," Handman, Metropolitan Orchestra; Fox Trot, "In the Shadows," Fink, Orchestra; Address, "Our Friend, the Forest," (U. S. Dept. of Agriculture); Waltz, "It's a Wonderful World After All," Alexander, Metropolitan Orchestra; Whistling selection, "Swanee River Moon," Clarke, Charles Desmond; Fox Trot, "When the Leaves Begin to Fall," Baron, Metropolitan Orchestra; Fox Trot, "The French Trot," Davis, Orchestra; Instrumental selection, "Adele," Lanke, Orchestra; Whistling selection, "King of the Air," Steel, Charles Desmond; Fox Trot, "Tomorrow Morning," Squires, Metropolitan Orchestra; Fox Trot, "Toot, Toot, Tootsie," Barry, Orchestra; Waltz, "While the Years Roll By," Austin, Orchestra; March, "The Fox Trail," Metropolitan Orchestra.

**OTHER CLASS A STATIONS YOU MAY HEAR
TUESDAY**

Time given is Eastern standard (Arlington).

- 6:00 P. M.—WGI, WLK; 6:15 P. M.—WEAB;
- 6:30 P. M.—WEV, WGI; 7:00 P. M.—KWG, KYJ,
- WJAD, WLAG, WOAI, WPA; 7:30 P. M.—WGR;
- 7:45 P. M.—WGL; 8:00 P. M.—WBT, WCAH,
- WEAB, WRR; 8:15 P. M.—WAAP, WGR, WPA;
- 8:30 P. M.—WGF, WGI, WHAS; 8:45 P. M.—WLAJ,
- WNAD; 9:00 P. M.—WAAP, WEV, WLW; 9:15
- P. M.—WKN; 9:30 P. M.—WLK, WRR; 9:45 P. M.
- WJAD; 10:00 P. M.—KZN, WPA, WRK; 10:45
- P. M.—WAAP; 11:00 P. M.—KFAF, KWG; 11:30
- P. M.—WAAP.

Key to call letters appears on page 16.

Wednesday, January 24, 1923

KDKA—360 Meters, Westinghouse Electric
East Pittsburgh, Pa.

- 10:00 A. M. Music.
- 12:30 P. M. Music and Weather Report.
- 6:15 P. M. Dinner Concert by the KDKA Little Symphony Orchestra, Victor Saudek, Director.
- 7:15 P. M. News. Summary of the Iron and Steel Industries, prepared by the "Iron Age."
- 7:30 P. M. Bedtime story for the Children.
- 7:45 P. M. Report of the New York Stock Exchange. Letter from "Farm and Home."
- 8:00 P. M. Joe Marshall, Special Representative of the American Railway Association, Chicago, Ill., will continue his talk regarding freight claim prevention.
- 8:30 P. M. Concert by the KDKA Little Symphony Orchestra, Victor Saudek, Director; Mrs. Frederick Edmondson, soprano; Mrs. Ellsworth Giles, accompanist.

Program: Selections by the Orchestra, Overture "Orpheus," Offenbach; Popular Hits of the day; "Ballet Egyptien," Luigini; - (a) "At Dawning," and (b) "Heart of Her," Cadman; Concert Waltz, "Roses From the South," Strauss; Excerpts from "The Firefly," Friml; and Grand March from "Aida," Verdi. Soprano solos, "Mary of Argyle," and "Believe Me, if All Those Endearing Young Charms," and "Lorelei," with orchestra accompaniment; "South Carolina Croon Song, Harvey B. Gaul; "Just You," Burleigh, with piano accompaniment.

WJZ—360 Meters, Radio Corporation-Westinghouse
Newark, N. J.

- 9:00 A. M. Early morning reports and prices and farm products.

For Maximum
EFFICIENCY

"PACENTIZE"

PACENT MULTIJACK
Provides **THREE** perfect jacks in a single moulded unit. This device like all other PACENT Radio Essentials ideally meets an important radio need. Ask your dealer to demonstrate the PACENT Multijack, Twinadapter, Duojack and other PACENT Radio Essentials. Write for Descriptive Bulletin C-1

Don't Improvise—"Pacentize"

PACENT ELECTRIC COMPANY
INCORPORATED

Manufacturers and Distributors of Radio and Electrical Essentials
Executive Offices: 22 Park Place, New York, N. Y.

BRANCH OFFICES

Philadelphia, Bourse Building	Washington, D.C. Munsey Bldg.
St. Louis, 704 Pontiac Building	Minneapolis, 827 1/2 Nicollet Ave.
Chicago, 33 So. Clinton Street	San Francisco, Sheldon Bldg.

*Members,
Radio Section, Associated
Mfrs. of Electrical Supplies*



Canadian and British Licenses: Colonial Radio, Ltd. Hamilton, Canada.



Gave Pleasing Program from KDKA



The Pittsburgh Mandolin Club

- 11:55 A. M. Standard Time Signals and weather forecast.
- 12:00 M. Opening prices on active bonds and stocks, grain, coffee and sugar; midday reports and prices on farm products; musical program.
- 4:00 P. M. Closing prices on stocks and bonds, grain, coffee and sugar.
- 4:05 P. M. "Fashions" from Women's Wear Daily Newspapers.
- 5:30-6:15 P. M. Resumé of Sports; musical program; special features; closing prices on stocks, bonds, grain, coffee and sugar; "Iron and Steel Review" by the Iron Age.
- 7:00 P. M. "Animal Stories" by Florence Smith Vincent, author of the "Peter's Adventures" Book, and Editor of the Women's Page of the New York Evening Telegram.
- 9:00 P. M. "Planting Bulbs for Spring Flowers", by Leonard Barron, Editor of Garden Magazine. courtesy Doubleday Page & Company.
- 9:30 A. M. "A Visit to the Brazilian Centennial" by Miss Annie S. Peck, A.M.F.R.G.S. who recently returned from a trip to Rio de Janeiro and the Exposition. Miss Peck is the author of three important books on South America. The first, "A Search for the Apex of America", is chiefly an account of her mountain climbing in the Andes, including her ascent of Mt. Huascaran (21812 feet) in 1908, still the highest point on this hemisphere attained by any American. "The South American Tour" is the only practical guide book of South America, "Industrial and Commercial South America" heads John Barrett's list of important books on that continent, and contains the most complete and accurate information in regard to the physical characteristics, the resources and

industries of the various Republics and of each individual state.

9:55-10:00 P. M. Arlington Time Signals, weather forecast.

**KYW—400 Meters, Westinghouse, Chicago, Illinois
Central Standard Time**

9:25 A. M. Opening Market Quotations, Chicago Board of Trade.

10:00 A. M. Market Quotations, Chicago Board of Trade.

Quotations every half hour thereafter until 1:00 P. M.

1:20 P. M. Closing Market Quotations, Chicago Board of Trade.

2:15 P. M. News and Market Reports.

2:30 P. M. Closing Quotations, Chicago Stock Exchange.

3:00 P. M. News and Sports.

4:00 P. M. News and Sports.

4:15 P. M. News, Market and Stock Reports.

4:30 P. M. News and Sports.

5:00 P. M. News and Sports.

6:50 P. M. Bedtime Stories.

8:00 to 9:00 P. M. Musical Program by Eva Ray, soprano and accompanist; Leonard J. Huber, baritone; Edward W. C. Schreiner, Tenor; Madeline Pendleton, reader; Walter Tuhoy, violinist; Gertrude Michel, pianist; Ruth Martin, accompanist; Isham Jones and his Orchestra from College Inn.

Program: "The Blue Lagoon," Winternitz, Walter Tuhoy; "Calling Me Home to You," Dorel; "Berceuse from Jocelyn," Godard, Eva Ray (Violin Obligato by Walter Tuhoy); Reading, Selected, Madeline Pendleton; (a) "Messages," Grey, (b) "Sing Me to Sleep," Greene, L. J. Huber (Violin Obligato by Walter Tuhoy); "Murmuring Zephyrs," Jensen, Gertrude Michel; Popular Dance Selections by Isham Jones and his Orchestra; (a) "Total Eclipse" (Samson and Delilah), (b) "I Love a Little Cottage," Handel, Edward Schreiner (Obligato by Walter Tuhoy); Duet: "One More Day," Ball, Eva Ray and Leonard J. Huber; Reading, selected, Madeline Pendleton; Duet: "Sing, Sing, Bird On the Wing," Nutting, Eva Ray and Edward W. Schreiner; Trio: "Protect Us, Oh, Father," Eva Ray, Mr. Huber and Mr. Schreiner.

9:00 P. M. News and Sports.

9:05 P. M. Special features as announced by Radiophone.

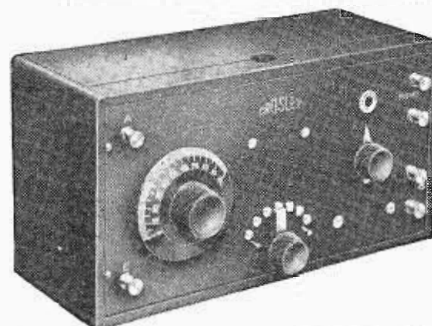
**KQV—360 Meters, Doubleday-Hill Electric Co.
Pittsburgh, Pa.**

10:00 P. M. Program will be given by the Royal Columbians, Kings of Melody Land, of Mt. Washington, Pa., with solos and incidental choruses by William Brennan, tenor; manager of the Columbians. The personnel of the orchestra and instrumentation is: Jennings Burnett, piano; William Frederick Bruck, banjo; Benjamin Brown, saxophone; with drums and cornet added for this program. All members of the orchestra are well known in the South Hills and the organization has a local reputation that is worth while.

Program: Tenor solos, "A Radio Song," by Owen Murphy; and "The Little Red School House." Orchestra: March, "Rajah," "You Gave Me Your Heart," "Stuttering," "An Irish Medley," Waltz; "Blue;" "Homesick;" "Mr. Gallagher and Mr. Sheen;" "My Buddy," Waltz; "Lovin' Sam, the Shiek of Alabama;" Saxophone solo: "Saxophobia," played by Benjamin Brown.

CROSLEY HARKO SENIOR

Mfg. for us under licence under Armstrong Pat. 1,113,149



THIS remarkable one-tube set, better than ever before, through increased quantity production is now sold far below all competition. Various improvements and changes have been made from earlier types of the Harko Senior, including

longer inductance (making distant broadcast reception more positive with less antennae), more perfect tube control, and various other features which will result in even greater popularity for this already popular set.

In Cincinnati people regularly hear stations such as Newark, N. J., Davenport, Iowa; Atlanta, Ga.; Detroit, Mich.; Schenectady, N. Y.; Pittsburgh, Pa.; Louisville, Ky.; etc.

The panel is genuine formica with the binding posts stamped and filled with a white lettering substance. The cabinet is of neat design, rubbed Adam brown mahogany finish, and is in every way a beautiful and efficient outfit.

Price without tubes, batteries or phones, - - - \$15.00
If rubbed and engraved panel is desired and so ordered, add \$1.00 making the price, - - - \$16.00

THE CROSLEY MANUFACTURING CO.

1213 Alfred Street, CINCINNATI, OHIO

PITTSBURGH'S PIONEER RADIO DISTRIBUTORS
Established 26 years — Radio 9 Years

FOR BROADCAST RECEPTION

- Radiola Jr. - - - - - \$25.00
- Radiola Sr. for long distance reception \$65.00
- Radiola Sr. Amplifier—increasing receiving range—Loud Speaker possible - - - - - \$68.00
- Radiola Grand—Superlative Reception \$325.00
- King Amplitone - - - - - \$9.00
(Loud Speaking Device)



Stromberg Carlson Head-Sets \$7.50

Complete Line RADIO PARTS and ESSENTIALS

Doubleday-Hill Electric Company

Broadcasting Station KQV

719-21 Liberty Ave.

Pittsburgh, Pa.

**OTHER CLASS A STATIONS YOU MAY HEAR
WEDNESDAY**

Time given is Eastern Standard (Arlington).

6:00 P. M.—WGI, WLK, WOS; 6:15 P. M.—WEAB; 6:30 P. M.—WEV, WGI; 7:00 P. M.—KWG, KYJ, WGI, WJAD, WLAG, WOAI, WPA; 7:30 P. M.—WBAB, WGR; 8:00 P. M.—WBT, WDAE, WEAB, WRR; 8:15 P. M.—WAAP, WGR, WPA; 8:30 P. M.—WHAS, WOAI; 8:45 P. M.—WNAD; 9:00 P. M.—WOS, WSY; 9:15 P. M.—WKN; 9:30 P. M.—WOH, WRR; 9:45 P. M.—WJAD; 10:00 P. M.—KDYS, KZN, WAAC, WPA; 10:45 P. M.—WAAP; 11:00 P. M.—KFAF, WBL, WEAB; 11:30 P. M.—WAAP.

Key to call letters appears on page 16.

Thursday, January 25, 1923

**KDKA—360 Meters, Westinghouse Electric
East Pittsburgh, Pa.**

- 10:00 A. M. Music.
12:30 P. M. Music.
7:00 P. M. News. "Health Hints" prepared by the United States Public Health Service" Washington, D. C.
7:15 P. M. "Special Farm Program"—Knowing the interest of farmers in radio and the increasing number of receiving sets being installed in country homes, KDKA will present a special farmers' program each Thursday night. This program will be prepared by The National Stockman and Farmer, an agricultural paper well known throughout the East. The periods 7:15 to 7:30; 7:45 to 8:15 P. M., will include the following features: "Farmers Business Letter;" Pittsburgh Live Stock Market; Affairs in Washington; Agricultural News of the Week; Farm Women's Problems and Farm Facts and Fancies.
7:30 P. M. Bedtime Story for the Children.
8:30 P. M. Concert by the Brosky Studios. Alfred D'Auberg, violin; J. Ray Nicodemus, piano.
Program: Violin solos, "Concerto in D Major," Paganini; "Barcarolle," Paznanski; "Zephyr," Hubay. Piano selections, "Ballet in G Minor," Chopin; "Rhapsodie," Liszt. Vocal selections will be announced by radiophone.

**WJZ—360 Meters, Radio Corporation-Westinghouse
Newark, N. J.**

- 9:00 A. M. Early morning reports and prices on farm products.
11:55 A. M. Standard time signals and weather forecast.
12:00-2:15 P. M. Opening prices on active bonds and stocks, grain, coffee and sugar; midday reports and prices on farm products; musical program.
4:00 P. M. Closing prices on stocks and bonds, grain, coffee and sugar.
4:05 P. M. "Fashions" from Women's Wear Daily Newspaper.
5:30-6:15 P. M. Resumé of Sports; musical program; special features; closing prices on stocks, bonds, grain, coffee and sugar.
7:00 P. M. "Jack Rabbit Stories" by David Cory, New York Evening Mail.
8:30 P. M. Estey Organ Recital from the Estey Auditorium New York City.
Program: "Overture to Martha," Flotow; "Selections from El Travatore," Verdi; "Intermezzo from Cavalleria Rusticana," Mascagni; "Vorspiel to Tristan and Isolde," Wagner; "Selections from Faust," Gounod; "Serenata from Pagliacci," Leoncavello; "March from Taunhauser," Wagner; "Sextette from Lucia," Verdi; "Grand March from Aida," Verdi.
9:15 P. M. Army Night. "Industrial Mobilization", by General Robert L. Bullard, Commander of the 2nd Corp. Area. Music by the 16th Infantry Band.
9:55-10:00 P. M. Arlington Time Signals, weather forecast.
10:01 P. M. Program continued by the U. S. Army.

**KYW—400 Meters, Westinghouse, Chicago, Illinois
Central Standard Time**

- 9:25 A. M. Opening Market Quotations, Chicago Board of Trade.
10:00 A. M. Market Quotations, Chicago Board of Trade.
Quotations every half hour thereafter until 1:00 P. M.
1:20 P. M. Closing Market Quotations, Chicago Board of Trade.
2:15 P. M. News and Market Reports.
2:30 P. M. Closing Quotations, Chicago Stock Exchange.
3:30 P. M. News and Sports.
4:00 P. M. News and Sports.
4:15 P. M. News, Market and Stock Reports.
4:30 P. M. News and Sports.
5:00 P. M. News and Sports.
6:50 P. M. Children's Bedtime Stories.
8:00 to 9:00 P. M. Musical Program Courtesy of Lyon & Healy Concert & Artists Department. Program will be announced by Radiophone.
9:00 P. M. News and Sports.
9:05 to 9:25 P. M. "Twenty Minutes of Good Reading," by Rev. Claude J. Pernin, S. J., Head of Department of English, Loyola University.

**WGY—370 Meters, General Electric Co.
Schenectady, N. Y.**

- 7:45 P. M. Music Program.
Program: March, "Army Heroes," B. M. Young, Salvation Army Band, Samuel Slater, Director; Coronet solo, "Tramp, Tramp," Goldman, A. Stone, soloist, with band accompaniment; Band selection, "Beautiful Stream," Hawkes, Salvation Army Band; Reading, "My Mate," Service, Edward Drumm; March, "Adoration," Broughton, Salvation Army Band; Euphonium solo, "Carnival of Venice," Clark, A. Tompkins, Miss E. Tompkins, accompanist; Address, "Solving the Mystery of the Ancient Maya Civilization," (Pallophotophone) Dr. William Gates, Director of National Museum, Guatemala; Band selection, "Eventide," Rimmer, Salvation Army Band; Instrumental Quartet, "Veritas," arranged by Goldsmith F. Fayhe, C. Fayhe, J. Galloway and A. Tompkins Reading, "How Deacon Tubman and Parson Whitney Spent New Years," Greene, M. Drumm; March, "Victory," Broughton, Salvation Army Band; Euphonium solo, "Home, Sweet Home," Rollinson, J. Galloway, Miss E. Galloway, accompanist Band selection, "American Melodies," Broughton, Salvation Army Band; Reading, "Uncle Josh and the Photographer," Cal Stewart, M. Drumm; March, "Hally," Hall, Salvation Army Band; "Star Spangled Banner."

**OTHER CLASS A STATIONS YOU MAY HEAR
THURSDAY**

Time given is Eastern Standard (Arlington).

- 6:00 P. M.—WGI, WLK; 6:15 P. M.—WEAB;
6:30 P. M.—WEV, WGI; 7:00 P. M.—KWG, KYJ,
WJAD, WLAG, WOAI, WPA; 7:30 P. M.—WBS,
WGR; 7:45 P. M.—WGL; 8:00 P. M.—WBT, WEAB,
WRR; 8:15 P. M.—WAAP, WGR, WPA; 8:30 P. M.—
WHAS; 8:45 P. M.—WLAJ, WNAD; 9:00 P. M.—
WEV, WGI, WLAG, WLW; 9:15 P. M.—WKN; 9:30
P. M.—WRR; 9:45 P. M.—WJAD; 10:00 P. M.—
KDYS, KZN, WPA, WRK; 10:45 P. M.—WAAP;
11:00 P. M.—KYJ; 11:30 P. M.—WAAP.

Key to call letters appears on page 16.

Friday, January 26, 1923

**KDKA—360 Meters, Westinghouse Electric
East Pittsburgh, Pa.**

- 10:00 A. M. Music.
12:30 P. M. Music.
6:15 P. M. Dinner Concert by the KDKA Little Symphony Orchestra, Victor Saudek, Director.
7:15 P. M. News. Letter from "Farm and Home."
7:30 P. M. Bedtime Story for the Children.
7:45 P. M. Report of the New York Stock Exchange. Report on World Trade Conditions, prepared by the Trade and Industrial Bureau of the Pittsburgh Chamber of Commerce.
8:00 P. M. "Touch Stones," by Marjory Stewart.
Program: "Elegy Written In the Country Church Yard," Grey; "To a Sky Lark," by Percy B. Shelley; "Ode to the West Wind," by Percy B. Shelley.
8:20 P. M. "Etiquette" by Mrs. Chester B. Story.
8:30 P. M. Concert by KDKA Little Symphony Orchestra, Victor Saudek, Director; Mrs. Ellen Davis, Soprano.
Program: Selections by the Orchestra, "Overture Raymond," Thomas; (a) "Au Matin," Godard; (b) "Siziletta," Von Blon; Scenes from "Robin Hood," De Koven; "Under the Tree," from "Scenes Alsacian," duet for clarinet and cello; Popular Hits; (a) "Valse Triste," Sibelius; "Moment Musical," Schubert; "Voice of Time," Luigini (with cathedral chimes); Old Time Songs. Soprano solos, "Vissi d'arte," from "La Tosca," Puccini; "Spirit Flower," Campbell-Tipton; "Si mes vers avaient des ailes," Hahn; "I Have Come," D'Hardelot.

**WJZ—360 Meters, Radio Corporation-Westinghouse
Newark, N. J.**

- 9:00 A. M. Early morning reports and prices on farm products.
11:55 A. M. Standard Time Signals and weather forecast.
12:00 M to 2:15 P. M. Opening prices on active bonds and stocks, grain, coffee and sugar; midday reports and prices on farm products; musical program.
4:00 P. M. Closing prices on stocks and bonds, grain, coffee and sugar.
4:05 P. M. "Fashions" from Women's Wear Daily Newspaper.
5:30 P. M. Special features, closing prices on stocks, bonds, grain, coffee and sugar.
5:40 P. M. "A Story from the Youth's Companion", The Two Bobs; How Young Bob "got" the train robber who "got" his father. Story by Will Levington Comfort.
5:50 P. M. Conditions of Leading Industries by R. D. Wychoff, Editor of the Magazine of Wall Street.
6:00 P. M. Resume' of Sporting events; musical program.
7:00 P. M. "Bedtime Stories" by Thornton Burgess.
7:15 P. M. "Bull Dogs" by Frank F. Dole, noted authority.
7:30 P. M. "Practical Side of Short Story Writing" by Wm. H. Osborne, of Newark.
8:30 P. M. NEW YORK CONCERT OF YALE MUSICAL CLUBS.

The Annual New York concert of the Yale Glee, Banjo and Mandolin Clubs which will be held at

the Hotel Plaza on Friday evening, January 26th at 8:30 o'clock will be broadcasted by WJZ the Radio Corp-Westinghouse Station at Newark, N. J., on 360 meter wave; a special Western Union Wire will be used to relay the concert from New York to Newark. The concert will be followed by a dance given under the auspices of the Yale Club. This is the only opportunity for Yale families to gather socially, and it has the endorsement of the University and Faculty authorities. This occasion is accepted by the undergraduates to meet the graduates, and the graduates on their part are delighted to have the opportunity of coming into closer and more intimate contact with the undergraduate life, thereby reaching a better understanding of the problems which Yale is facing and solving.

The officers of the Yale Glee, Banjo and Mandolin Clubs are: C. M. Dole, '23, President, C. S. Ohley, '23, Vice-president, A. N. Wheeler, Jr., '23, Manager, J. Locke, '24, Asst. Manager and M. M. Bartholomew, '07S, Musical Director.

The Committee in charge of the New York concert is made up of James C. Auchincloss, '08, Chairman, Courtlandt D. Barnes, '02, Samuel Sloan Colt, '14, Charles D. Dickey, Jr., '16, Harry G. Holt, '10, and Morris K. Parker, '01.

The following ladies are assisting the Committee, Mrs. James C. Auchincloss, Miss Juliet McM. Bartlett, Miss Sarah T. Bulkely, Mrs. Samuel Sloan Colt, Mrs. Reginald G. Coombe, Mrs. Charles D. Dickey, Jr., Mrs. Douglas Gibbons, Mrs. Morris Hadley, Mrs. E. Roland Harriman, Mrs. John W. Haynes, Mrs. Robert A. Lovett, Mrs. Seth Low, Mrs. Huntington Lyman, Mrs. Ranald MacDonald, Mrs. Kenneth O'Brien, Miss Margaret Paris, Mrs. Charles Pratt, Mrs. William Ross Proctor, Jr., Mrs. Frank P. Shepard, Mrs. Henry G. Taylor, Mrs. Melville D. Truesdale and Mrs. Samuel Sloan Walker.

- 9:00 P. M. Literary Evening conducted by the Editorial Staffs of the Outlook, Scientific American and Harper & Bros.
9:55-10:00 P. M. Arlington Time Signals, weather forecast.
10:01 P. M. Program continued by the Yale Glee, Banjo and Mandolin Club.

**KYW—400 Meters, Westinghouse, Chicago, Illinois
Central Standard Time**

- 9:25 A. M. Opening Market Quotations, Chicago Board of Trade.
10:00 A. M. Market Quotations, Chicago Board of Trade. Quotations every half hour thereafter until 1:00 P. M.
1:20 P. M. Closing Market Quotations, Chicago Board of Trade.
2:15 P. M. News and Market Reports.
2:30 P. M. Closing Quotations, Chicago Stock Exchange.
3:00 P. M. News and Sports.
4:00 P. M. News and Sports.
4:15 P. M. News, Market and Stock Reports.
4:30 P. M. News and Sports.
5:00 P. M. News and Sports.
6:50 P. M. Children's Bedtime Stories.

Chicago Artists at Station KYW



Left to Right;—Ethel Carlman McCullough, contralto; Antoinette McCullough, soprano; Frank L. Cowan, tenor; Birdie Gordon, soprano

8:00 P. M. Musical Program, Courtesy of Inland Electric Co., Radio Department.

Ole Vangsnes, tuba; Arndt Nordlie, drums; Ray Taylor, saxophone; Bill Curran, banjo; Earl Tanner, guitar; Bob Meyers, baritone; Fred Rose, accompanist; Melba A. Moore, piano; Bruce L. Stocking, piano; Maurice S. Wetzell, piano. Program: Moment Jazz, Inland Radio Dance Band; Moment Song ("November Rose"), Bob Meyers; Moment Piano ("A la Bien Aimee"), Melba A. Moore; Moment Guitar, Earl V. Tanner; Moment Jazz, Inland Radio Dance Band; Moment Song ("Meet Me Next Sunday"), Rob Meyers; Moment Piano, Bruce L. Stocking and Maurice S. Wetzell; Moment Jazz, Inland Radio Dance Band.

9:00 News and Sports.

9:05 P. M. Reviews of the latest books given by Llewellyn Jones, literary editor of the Chicago Evening Post.

**WGY—370 Meters, General Electric Co.
Schenectady, N. Y.**

7:45 P. M. Radio Drama.

Comedy—"The Traveling Salesman," James Forbes
The Cast:—"Mrs. Babbit," Ida Myreck; "Mrs. William Henry Dawson," Margaret V. Smith; "Bill Crabb," Severn La Valley; "William Henry Dawson," James S. B. Mullarkey; "Louella Ann Dawson," Rosemary St. Louis; "William Henry Dawson, Jr.," Ruth Edmonds; "Perce Gill," Cortland Hopkins; "Beth Elliott," Viola Karwowska; "Martin Brury," Horace Roberts; "Bob Blake," Edward H. Smith; "Ted Watts," Edward E. St. Louis; "Julius," Henry Miller; "John Kimball," Frank Quinn; "Ben Cobb," Frank Finch; "Franklin Royce," Frank Oliver.

Program selected: "Sometime," Kiefert, WGY Orchestra; "The Traveling Salesman:" Act I—In the depot at Grand Crossing on Christmas Morning; Overture, from the "American Maid," Stiles, WGY Orchestra; Comedy, "The Traveling-Salesman:" Act. II—Blake's rooms at the Elite Hotel Christmas night Selection, "Tell Me, Daisy," from "Blossom Time," Romberg, WGY Orchestra; Comedy, "The Traveling Salesman:" Act III—The office of Franklin Royce at two o'clock next day; Selection, "'Twas in the Month of May," from "Chauve Souris," Darensky, WGY Orchestra; Comedy, "The Traveling Salesman:" Act IV—Same as Act II, one hour later; Selection, "Follies of 1922," Cotero, WGY Orchestra.

10:30 P. M. Program of Old Time Favorites.

Program: Orchestra, Medley of Old Time Popular Tunes, Introducing Sidewalks of New York, "I Can't Tell Why I Love You," and "In the Good Old Summer Time," WGY Orchestra; Male Quartet (a) "Juniata," Spanish Melody, (b) "In the Gloaming," Harrison, the Radio Four; Cello solo, "Just a Song at Twilight," Molloy, Ernest Burleigh; Orchestra, Favorites of Other Years, Introducing "Turkey in the Straw," "Keep Dem Golden Gates Wide Open," "Hear dem Bells," "The Darktown Strutters' Ball," WGY Orchestra; Tenor solo, "When You and I Were Young, Maggie," Butterfield, John Stevenson; Violin solo, "Angel's Serenade," Braga, Edward A. Rice; Male Quartet (a) "My Old Kentucky Home," Foster, (b) "Tenting On the Old Camp Ground," Kittredge, (c) "Swing Low, Sweet Chariot," Negro Spiritual, The Radio Four; Orchestra, Civil War Songs: Introducing "Marching Through Georgia," "Battle Hymn of the Republic," "Bring the Good Old Bugle," "Dixie," WGY Orchestra; Violin solo, "Melody in F," Rubenstein, Leo Kliven; Bass solo, "The Old Sexton," Russell, John Chapman; Piano solo, "Spring Song," Mendelssohn, Male Quartet, (a) "The Quilting Party," Fletcher, (b) "Auld Lang Syne," Scotch Air, The Radio Four; Orchestra, "Memories from the World War," Introducing "Where Do We Go from Here, Boys!" "K-K-K-Katy," "Good Morning, Mr. Zip, Zip, Zip," WGY Orchestra; "Star Spangled Banner."

**KQV—360 Meters, Doubleday-Hill Electric Co.
Pittsburgh, Pa.**

4:30 P. M. Program for "Junior Radio Fans."
10:00 P. M. Program to be given by Elsie Matz Baumann, dramatic soprano; Ida M. Ewing, contralto, Ernest Scott, baritone, Mrs. Frederick Walker, accompanist.

All artists have been heard from Station KQV and are returned for this program in response to a request to repeat both the artist and program previously broadcast. It has been deemed more desirable to present the artists, however, in entirely different numbers and the program arranged for their return will present them to the Radio audience in one of even greater excellence than the one after which the request was received. All are Pittsburgh artists, with the exception of Miss Ewing, who is resident of McKeesport, adjacent to Pittsburgh, but who is contralto soloist in a Pittsburgh church.

Program numbers: Soprano solos, Aria from "Tosca," by Puccini; "Berceuse" from "Joycelyn," by Godard, with Violin Obligato (by special request); "The Star," by Rogers; "Phyllis Has Such Charming Graces," by H. Lane Wilson; "Still as the Night," by Bohm. Contralto solos: Mother, Dearest," a Russian Folk Song; selection from the Song Cycle, "Summertime." Baritone solos, Aria from "Il Trovatore," "Lo, the Tempest of My Heart;" "Absent," by Metcalf; "Forgotten," by Cowles; Trio, for soprano, contralto and baritone, "Go to Sleep, My Dusky Baby," with string, piano and organ accompaniment.

**OTHER CLASS A STATIONS YOU MAY HEAR
FRIDAY**

Time given is Eastern Standard (Arlington).

6:00 P. M.—WGI, WLK, WOS; 6:15 P. M.—WEAB; 6:30 P. M.—WEV, WGI; 7:00 P. M.—KWG, KYJ, WJAD, WLAG, WOAI, WPA; 7:30 P. M.—WGR; 8:00 P. M.—WBT, WDAE, WEAB, WRR; 8:15 P. M.—WAAP, WGR, WPA; 8:30 P. M.—WGF, WHAS; 8:45 P. M.—WNAD; 9:00 P. M.—WAAP, WGI, WLAG, WLW, WOS, WSY; 9:15 P. M.—WKN; 9:30 P. M.—WAAC, WLK, WRR; 9:45 P. M.—WJAD; 10:00 P. M.—KDYS, KZN, WPA; 10:45 P. M.—WAAP; 11:00 P. M.—KFAF, KWG, WBL; 11:30 P. M.—WAAP.

Key to call letters appears on page 16.

Saturday, January 27, 1923

**KDKA—360 Meters, Westinghouse Electric
East Pittsburgh, Pa.**

- 10:00 A. M. Music.
12:30 P. M. Music and Weather Report.
3:00 P. M. Popular Concert.
7:00 P. M. News. "Under the Evening Lamp" copyrighted stories by the Youths' Companion.
Program: "The Two Bobs," how young Bob "got" the train robber who "got" his father, Will Levington Comfort; "Milk By the Yard," a bit of humor; "The Good Penman," suggestions that will help you improve your handwriting; "Joy In Store for Hubby," one way to find out what size coat a man wears; "A Doubtful Compliment," that caused a hearty laugh; "The First Interview," how the lady reporter caught the President in swimming.
8:00 P. M. "The Art of Spending" by L. E. Huseman of the Diamond National Bank, Pittsburgh, Pa.
8:30 P. M. Banquet of the Veterans Association of the Westinghouse Electric & Manufacturing Company at McCreery's, Pittsburgh, Pa. Addresses by prominent officials and music by the Westinghouse Band under the direction of T. J. Vastine.

**WJZ—360 Meters, Radio Corporation-Westinghouse
Newark, N. J.**

- 9:00 A. M. Early morning reports and prices on farm products.
11:55 A. M. Standard Time Signals and weather forecast.
12:00 M. Opening prices on active bonds and stocks, grain, coffee and sugar; midday reports and prices on farm products; musical program.
4:00 P. M. Closing prices on stocks and bonds, grain, coffee and sugar.
4:05 P. M. "Fashions" from Women's Wear Daily Newspaper.
5:30 P. M. Closing prices on stocks, bonds, grain, coffee and sugar, resumé of sporting events; special features.
7:00 P. M. "Uncle Wiggily Stories" by Howard R. Garis, author.
8:30 P. M. "Fashions" by an editor of Harper's Bazar.
8:45 P. M. Concert by Edward Avis, Imitator of Song Birds.
9:15 P. M. Program arranged by the Good Housekeeping Magazine.
9:30 P. M. "Syncopated Melodies" by the Vincent Lopez Hotel Pennsylvania Dance Orchestra direct from the Grill, over the Western Union Wire to New York. The Vincent Lopez Orchestra is one of the most popular in New York City. Previous to their present engagement they have toured the country on the Keith's circuit and are also prominent by their playing at the "Debutantes Dances" at Asbury Park.
9:55-10:00 P. M. Arlington Time Signals, weather forecast.
10:30 P. M. "Current Topics", by the Institute for Public Service.

**KYW—400 Meters, Westinghouse, Chicago, Illinois
Central Standard Time**

- 9:25 A. M. Opening Market Quotations, Chicago Board of Trade.
10:00 A. M. Market Quotations, Chicago Board of Trade. Quotations every half hour thereafter until 1:00 P. M.
1:20 P. M. Closing Market Quotations, Chicago Board of Trade.
2:15 P. M. News and Market Reports.
2:30 P. M. Closing quotations, Chicago Stock Exchange.
3:00 P. M. News and Sports.
3:30 P. M. News and Sports.
4:00 P. M. News and Sports.
4:15 P. M. News, Market, and Stock Reports.
4:30 P. M. News and Sports.
5:00 P. M. News and Sports.
6:50 P. M. Children's Bedtime Stories.
8:00 to 9:00 P. M. Musical Program by the Salvation Army Staff Band. Adjutant J. Arthur Fynn, Conductor.
Program: March, "In the Field," Scotney; Selection, "The Light," Goldsmith; Vocal solo, "Praise," Colonel J. T. Flynn; Instrumental Sextette, "Rigoletto," Verdi; Descriptive, "The Storm," Slater; Instrumental Quartette, "Coronation," Meyerbeer; Paraphrase, "Eventide," Goldsmith; March, "Our Shepherd," Hall;
9:00 P. M. News and Sports.
9:05 to 9:25 P. M. "Under the Evening Lamp," a service including stories, articles and humorous sketches. This service is furnished by the Youth's Companion.

**OTHER CLASS A STATIONS YOU MAY HEAR
SATURDAY**

Time given is Eastern Standard (Arlington).

- 6:00 P. M.—WGI, WLK; 6:15 P. M.—WEAB;
6:30 P. M.—WEV, WGI; 7:00 P. M.—KWG, KYJ,
WJAD, WLAG, WOAI, WPA; 7:30 P. M.—WBAB,
WBS, WGR; 7:45 P. M.—WGL; 8:00 P. M.—WBT,
WEAB, WGI, WRR; 8:15 P. M.—WAAP, WGR,
WPA; 8:30 P. M.—WHAS; 8:45 P. M.—WLAJ,
WNAD; 9:00 P. M.—WLAG; 9:15 P. M.—WKN;
9:30 P. M.—WOH, WRR; 9:45 P. M.—WJAD; 10:00
P. M.—KDYS, KZN, WPA; 10:45 P. M.—WAAP;
11:00 P. M.—KFAF, KYJ, WEAB; 11:30 P. M.—
WAAP; 12:00 Midnight—WBL.

Key to call letters appears on page 16.

Westinghouse Station KDKA

*acknowledges the co-operation received
in the use of the following:*

Steinway Duo-Art Reproducing Piano and Rolls,
Courtesy of C. C. Mellor Company, Pittsburgh, Pa.

Brunswick Phonograph,
Procured from Gray and Martin, Pittsburgh, Pa.

Edison Phonograph and Records
From J. E. Bumbera, "Swissvale's Leading Druggist," Swissvale, Pa.

Victor Records
Loaned by S. Hamilton Company, Wilkinsburg, Pa.